

365 SATURDAY AMSTERDAM 2020

POWER PLATFORM SOLUTIONS FUNDAMENTALS

AMSTERDAM'S FREE ANNUAL
BUSINESS APPLICATIONS
TECHNICAL CONFERENCE BY
365 SATURDAY

crmpartners

PART OF / FELLOWMIND

macaw

Challenge accepted.

sogeti
Part of Capgemini

Microsoft



Dynamics 365



Power Automate



Power Apps



Power BI

Social

- www.365portal.org
- Twitter: @Powerthon
- Hashtag
 - #365SatAMS
- community.dynamics365.com

Preventive measures Coronavirus:

Wash your hands regularly with water and soap.



Cough and sneeze in the inside of your elbow.



Use paper tissues, but only once.



Avoid touching your mouth, nose and eyes.

[Aka.ms/coronavirus](https://aka.ms/coronavirus)

Session Agenda

Get to know the fundamentals of Power Platform Solutions

- I. Power Platform
- II. Environments
- III. Application Lifecycle Management (ALM)
- IV. Licensing



About me

- Microsoft 365 Enthusiast #PowerAddict
- Consultant #CitizenDeveloper



Microsoft
Global Security & Compliance
Partner of the Year



Microsoft
Country Partner of the Year
Netherlands



-  <https://www.linkedin.com/in/djangolohn/>
-  <https://twitter.com/LohnDjango>
-  <https://knowhere365.space/>

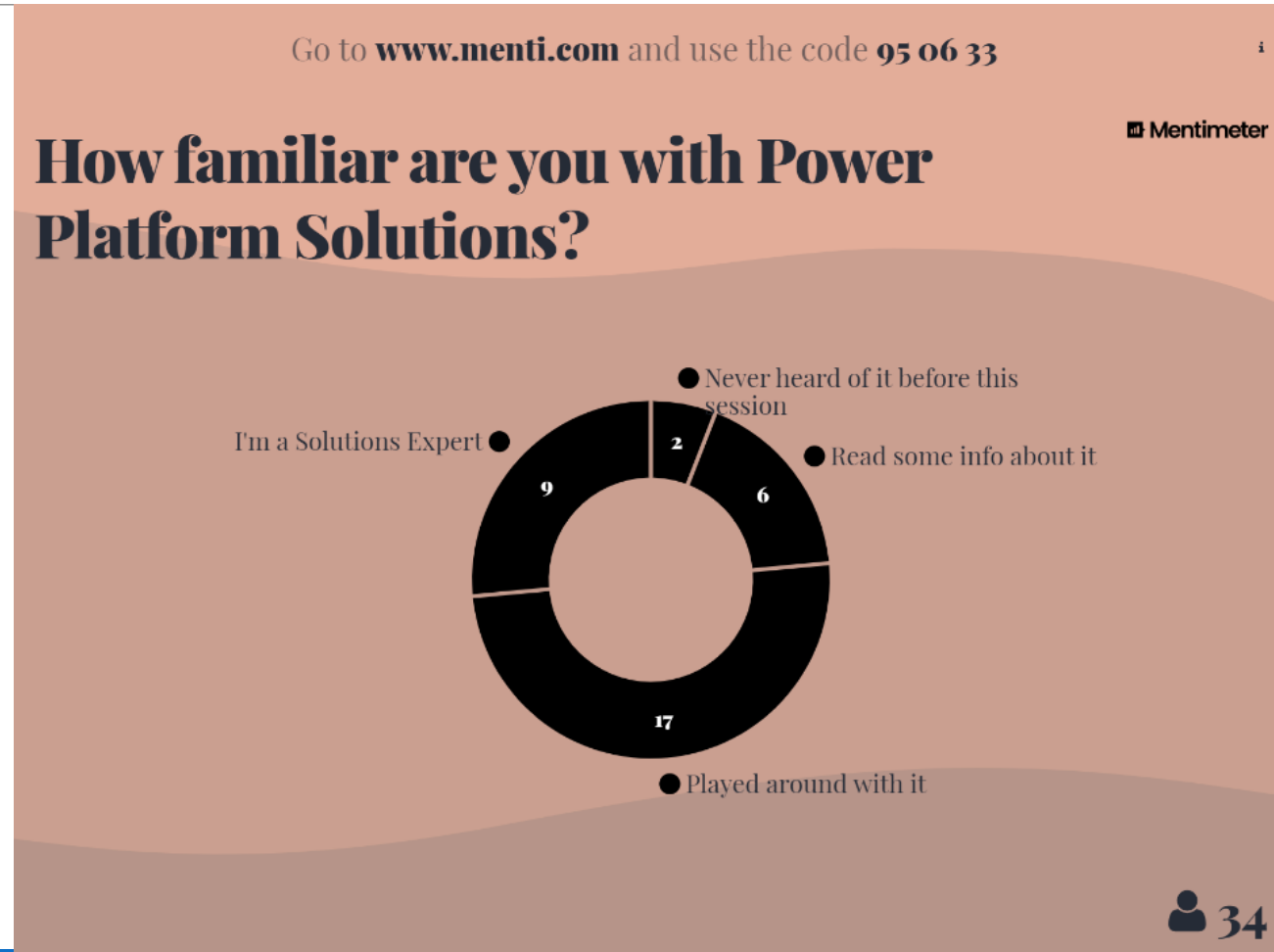
About you



About you



About you



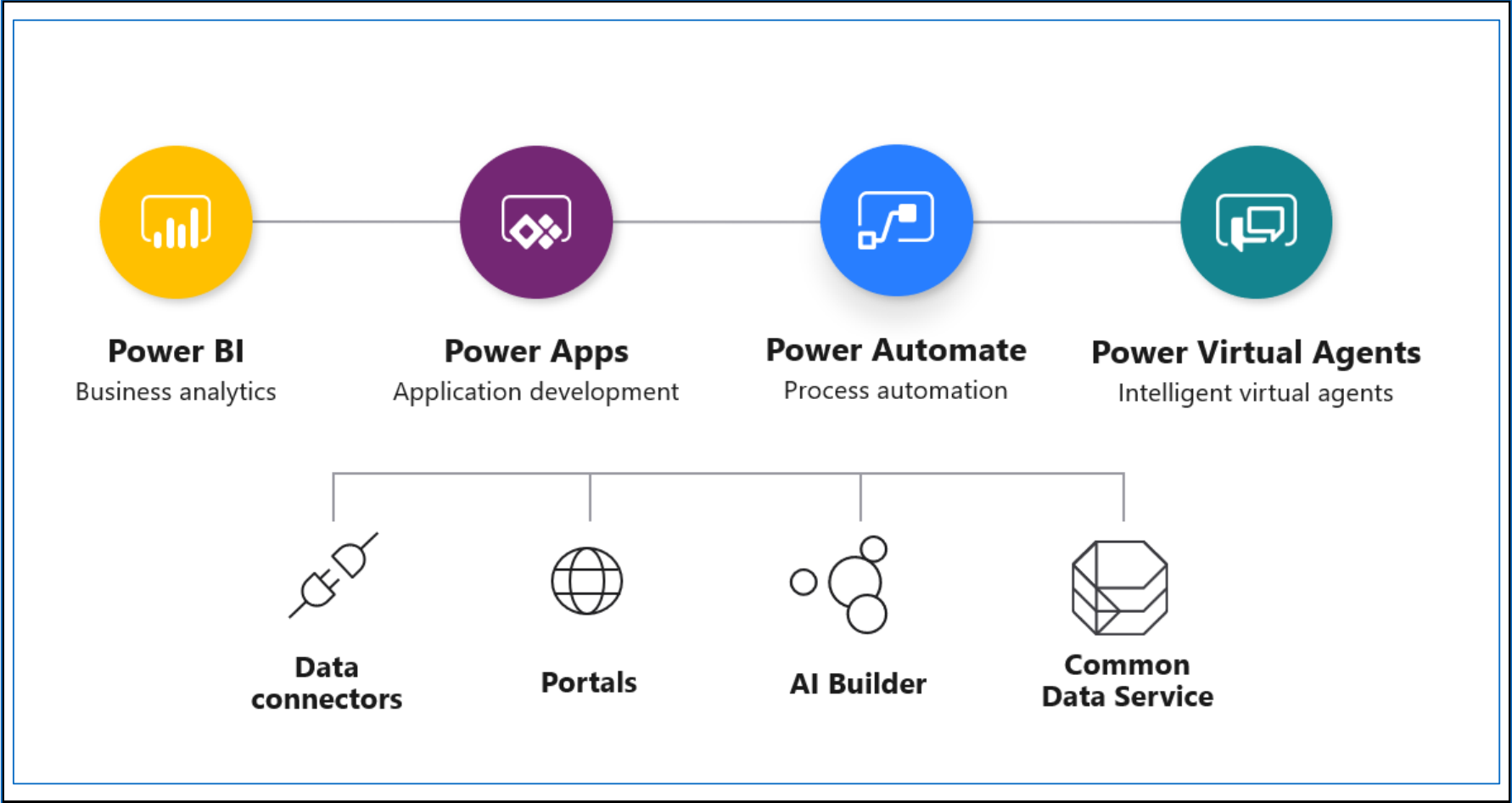


Power Platform

Power Platform Basics

Tools

Data

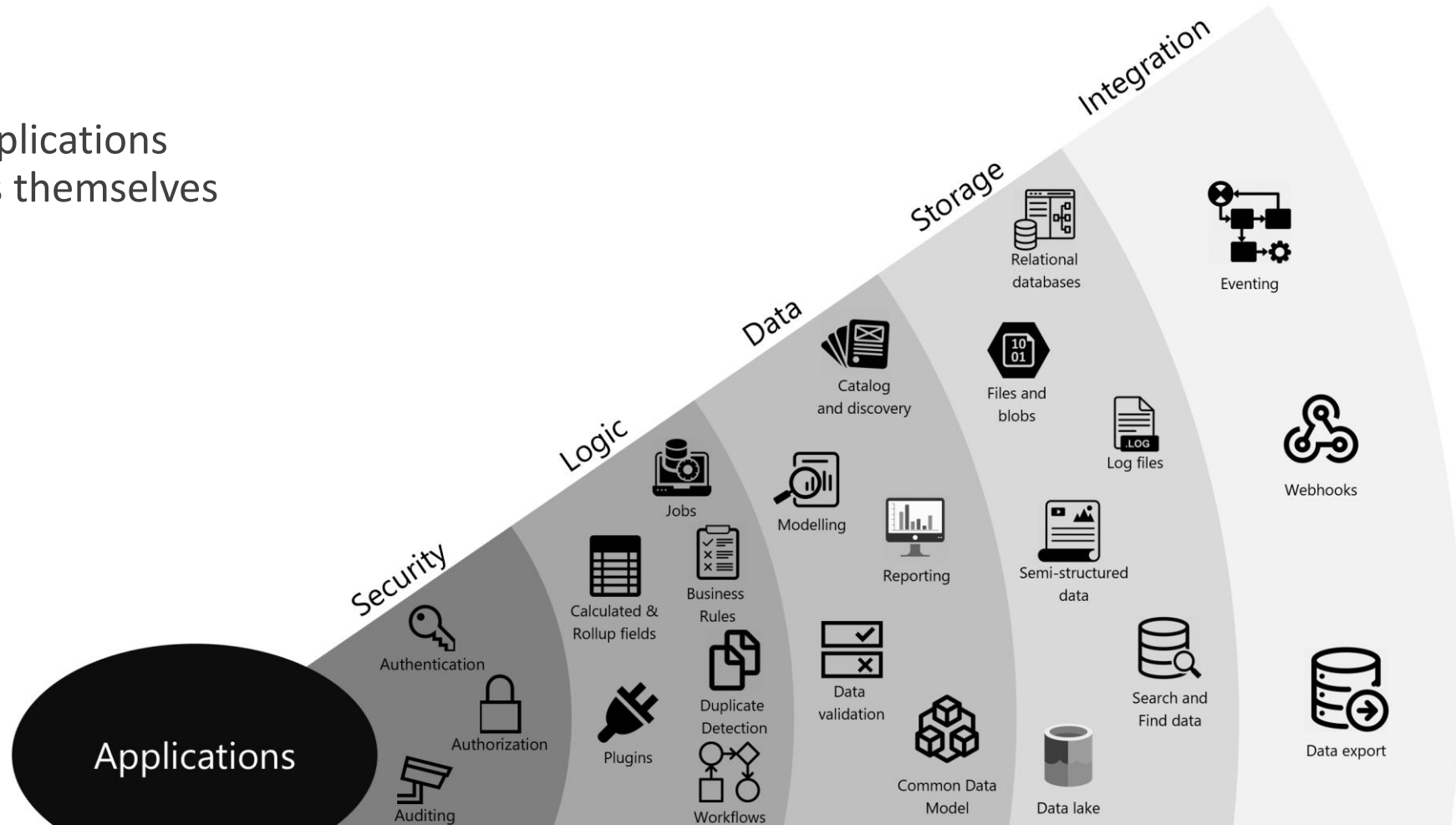


Common Data Service

Database-out-of-a-box

Built to support business applications
manageable by the business themselves

Database per environment





Environment Strategy

Environments

Types 

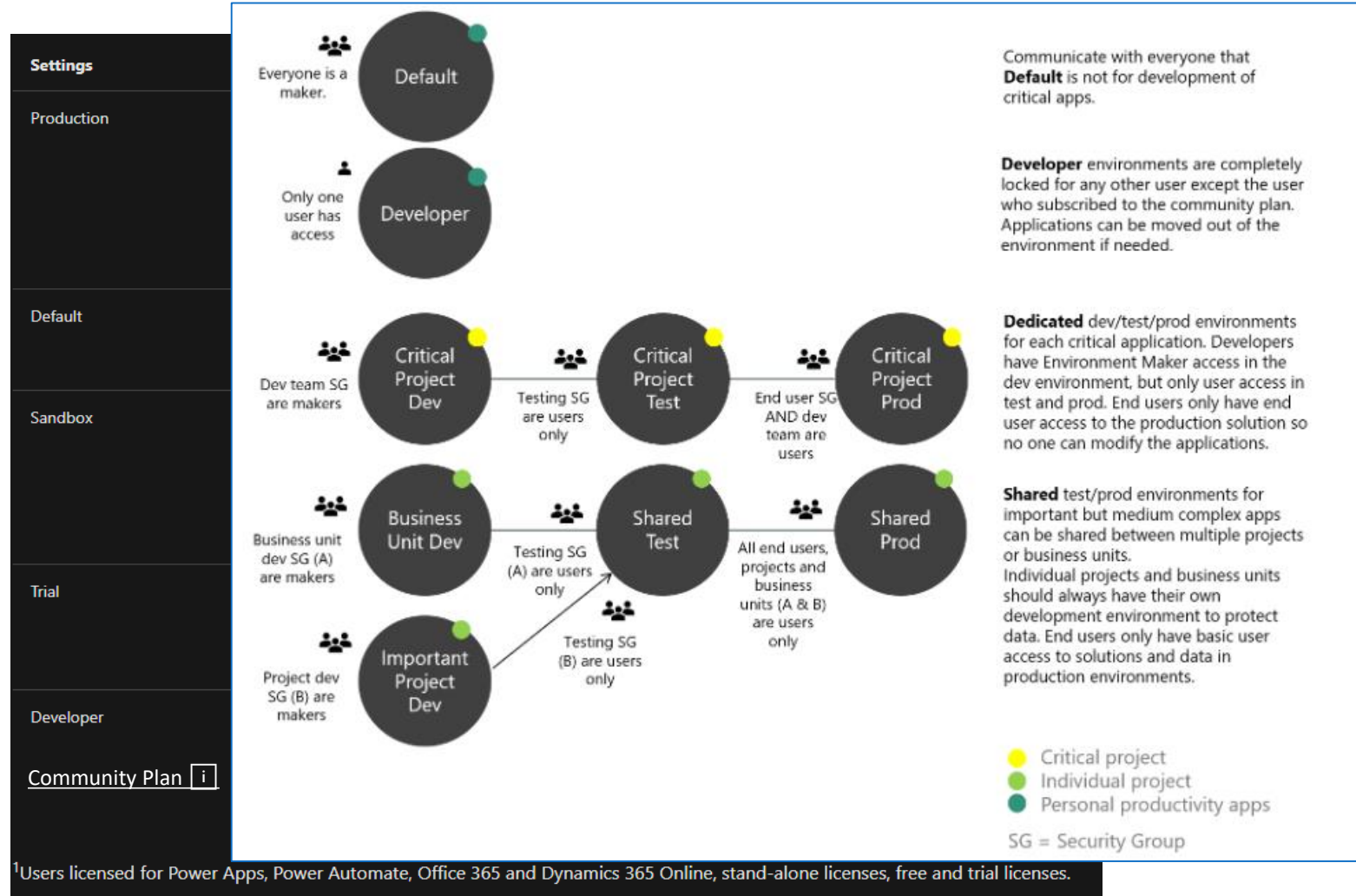
Environment Strategy 

Licensing 

Capacity 

Data access

Performance 



¹Users licensed for Power Apps, Power Automate, Office 365 and Dynamics 365 Online, stand-alone licenses, free and trial licenses.



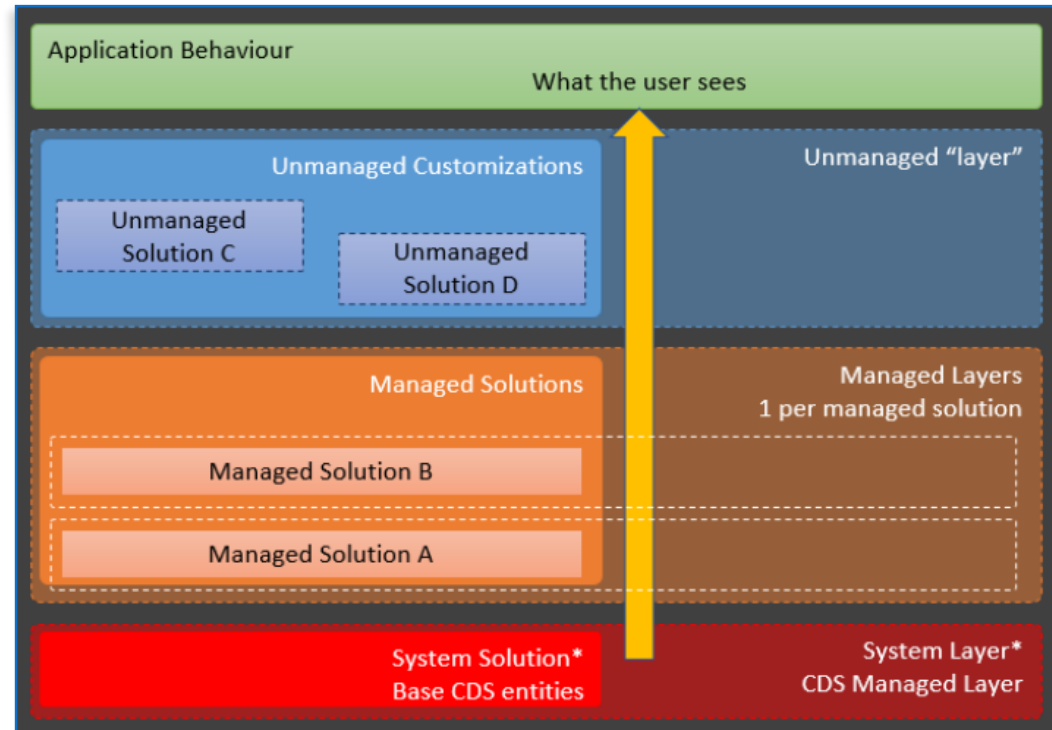
Application Lifecycle Management

Solutions

Container for components

Unmanaged vs Managed

Solution aware components



Solution creation

1. Power Platform Admin
2. Power Apps Admin
3. Power Automate & Power Apps

The image displays three overlapping screenshots of Microsoft Power Platform administration interfaces. The top screenshot shows the Power Platform Admin center with the URL `admin.powerplatform.microsoft.com/environments`. The middle screenshot shows the Power Apps Admin center with the URL `admin.powerapps.com/environments`. The bottom screenshot shows the Power Automate interface with the URL `powerautomate.com`. A cartoon character with spiky brown hair, wearing a white shirt and a green tie, is positioned in the foreground, holding a sign that says "LIVE DEMO" and a megaphone. The character is appearing to be on a laptop screen.

CREATED BY	CREATED
Jessica Pearson	02/25/2020
	01/24/2020



Licensing

Pay it forward

All about capacity

1. Seeded in Office365 ✗
2. Seeded in Dynamics365 ✓
3. Standalone licenses

[Licensing Guide Standalone](#)

[Pricing Standalone](#)

Common Data Service capacity – Capacity types and Purpose

Type	Purpose
Database	Stores and manages entity definitions and data
File	Store attachments to notes or emails in Customer Engagement applications and Power Apps. These include documents, image files, videos, PDF files and other crucial files needed in an organization.
Log	Records entity and attribute data changes over time for use in analysis and reporting purposes. Log capacity is designed to help organizations meet their auditing, compliance, and governance policies

Power Apps Default Capacity per tenant	Default per user	Default per app	Accrued per user	Accrued per app
Common Data Service Database capacity	10GB	1GB	250MB	50MB
Common Data Service File capacity	20GB	20GB	2GB	400MB
Common Data Service Log capacity	2GB	2GB	-	-

Power Automate Default Capacity per tenant	Default per user	Default per flow	Accrued per user	Accrued per flow
Common Data Service Database capacity	1GB	1GB	50MB	50MB
Common Data Service File capacity	2GB	2GB	200MB	200MB
Common Data Service Log capacity	200MB	200MB	-	-


Example:

Let's assumed that a new customer starts by purchasing 10 Power Apps per user licenses and 20 Power Apps per app licenses. In this case, the total tenant wide pooled capacity will be as follows:

Default and Accrued Capacity Allocation	Default/tenant	Accrued/10 Enterprise USL	Total Tenant wide capacity
Common Data Service Database Capacity	10GB	10*250MB + 20*50MB = 3.5GB	10GB + 3.5GB = 13.5GB
Common Data Service File Capacity	20GB	10*2GB + 20*400MB = 28GB	20GB+28GB = 48 GB
Common Data Service Log Capacity	2GB	NA	2GB

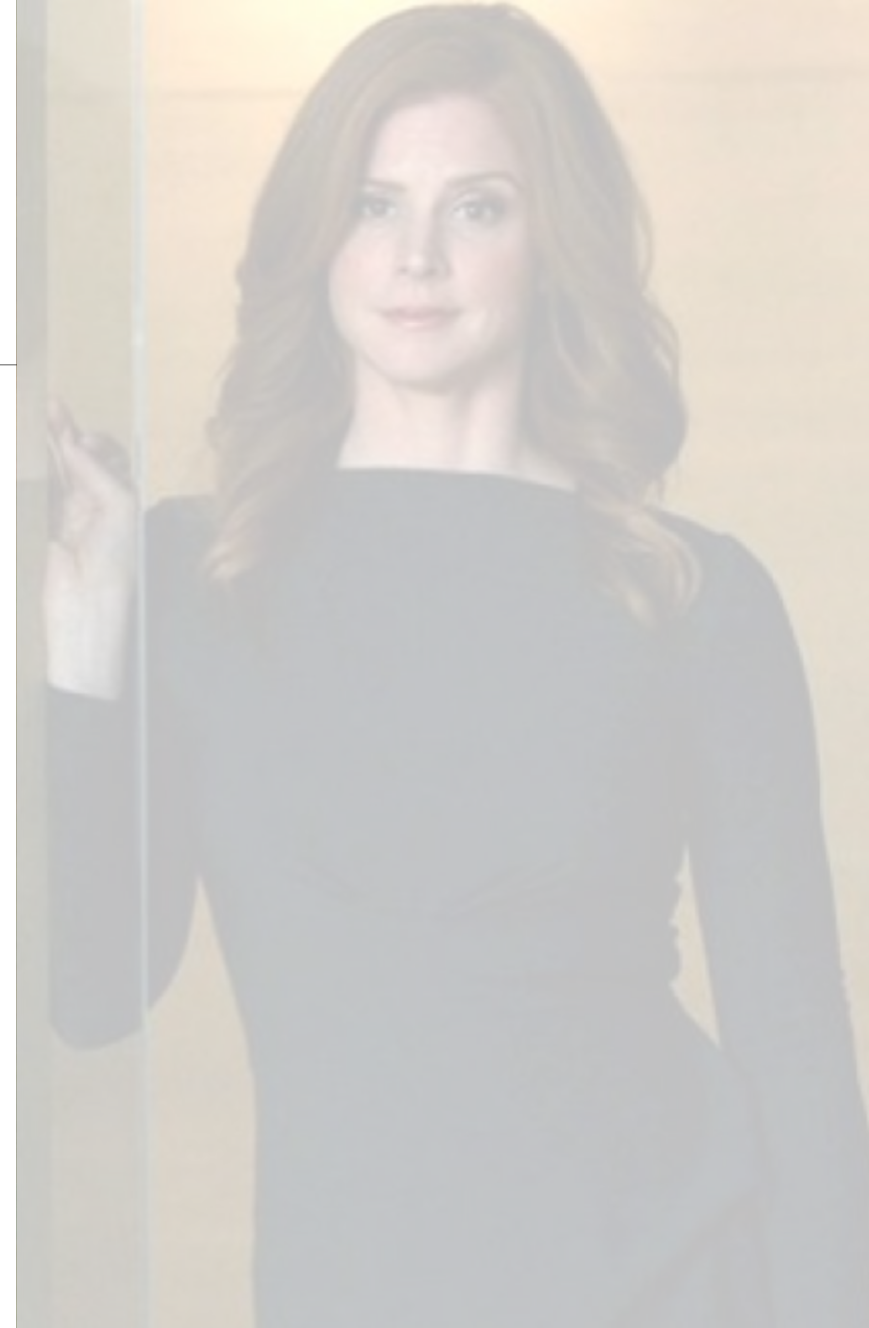
Do's & Don'ts

Do

- read the whitepaper *“Administering a low-code development platform - Power Apps and Power Automate Enterprise Deployment”* 
- determine Environment Strategy
- Promote community plan environment for your #CitizenDevelopers
- create and use your own publisher
- Publish customizations before Export/Import

• Don't

- lose your unmanaged solution
- < dependencies among solutions
- give new entities the same primary name



Questions?



Feedback

- We really value your feedback.
- Log-in to the 365portal event page and click on the session title.
- Make sure you have added the session to your schedule, and you have checked in.
- You can now leave feedback which will help the speaker and improve our future events for the community.

crmpartners

PART OF / FELLOWMIND

macaw

Challenge accepted.

sogeti
Part of Capgemini

Microsoft



MARCH 2020

365 SATURDAY AMSTERDAM 2020

AMSTERDAM'S FREE ANNUAL
BUSINESS APPLICATIONS
TECHNICAL CONFERENCE BY
365 SATURDAY



Dynamics 365



Power Automate



Power Apps



Power BI