



SharePoint Saturday Oslo

MICROSOFT FLOW
EXPRESS TO
SHAREPOINT

sopra steria



POINT : TAKEN



bouvvet



Session Agenda

- Power Platform
 - Microsoft Flow → Power Automate
- Data Sources
- SharePoint as a Data Source
- Do's & Don'ts in common scenario's



About me

- Microsoft 365 Enthusiast #PowerAddict
- Consultant



-  <https://www.linkedin.com/in/djangolohn/>
-  <https://twitter.com/LohnDjango>
-  <https://knowhere365.space/>

About you

What is your job title?

Mentimeter

business analyst
rockstar
sharepoint admin
sharepoint consultant
ceo
learning and development
technician
data engineer
consultant
senior consultant
senior consultant office
systemansvarlig
consulant
ikt rådgiver
operations consultant
principal consultant
improvement agent
it manager
architect



Voting is closed

Open voting

25

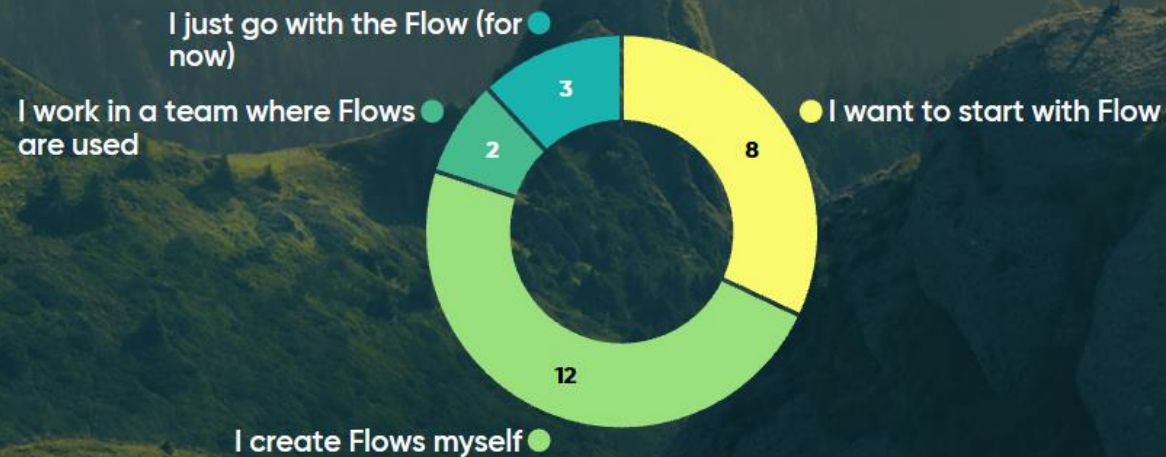
About you

Go to www.menti.com and use the code 58 10 82

i

How do you Flow?

Mentimeter



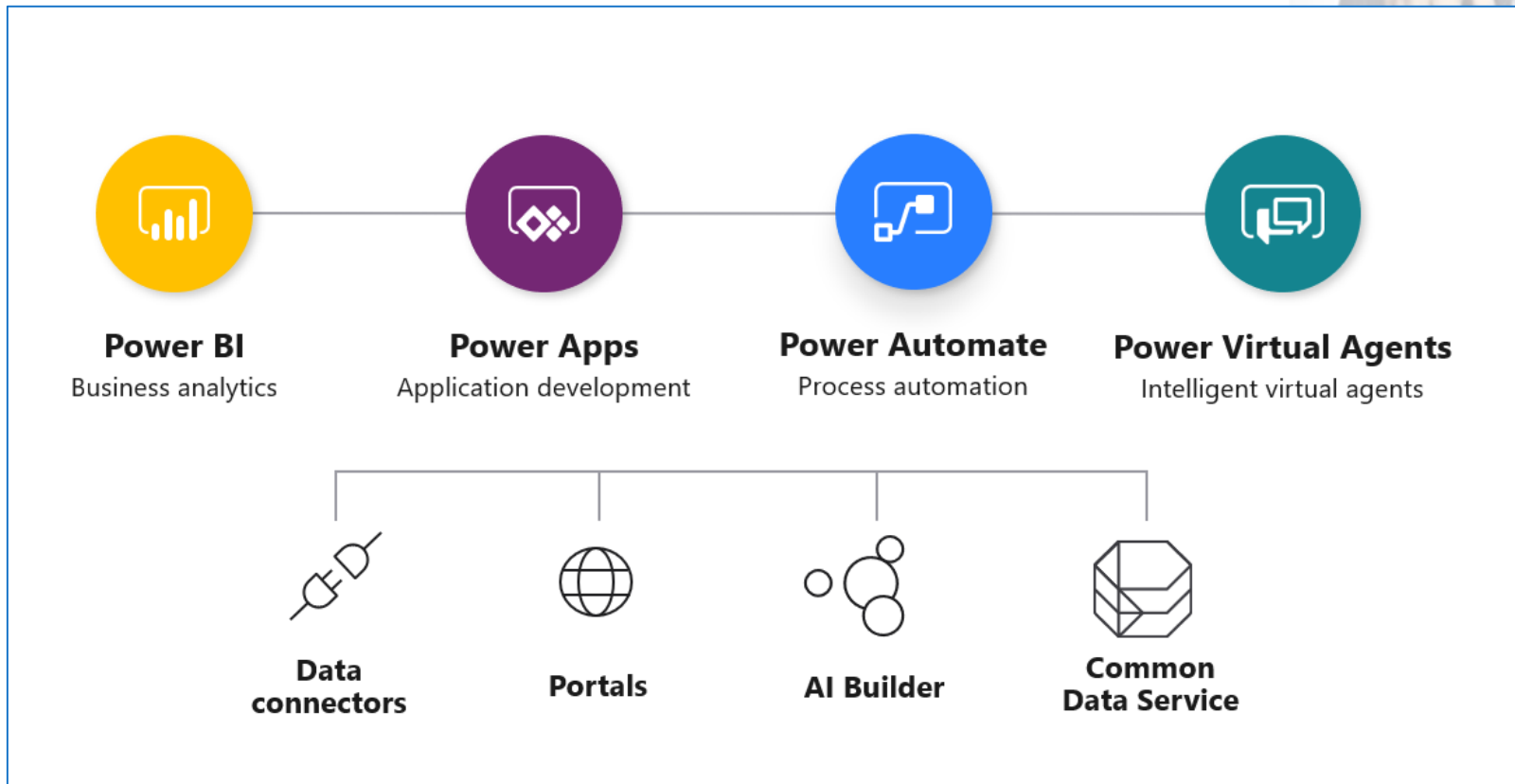
Voting is closed

Open voting

25

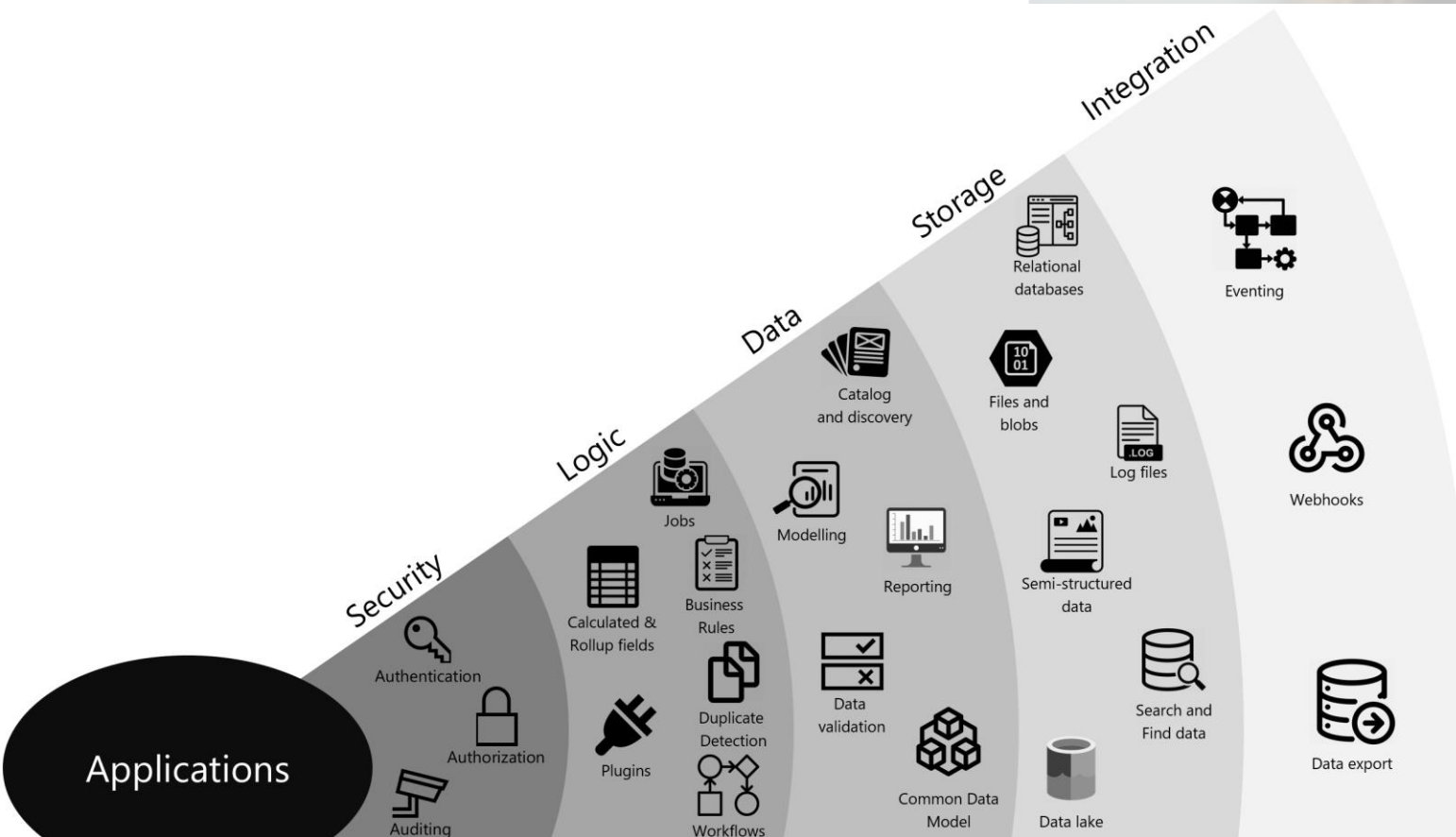
Power Platform

- Tools & Data



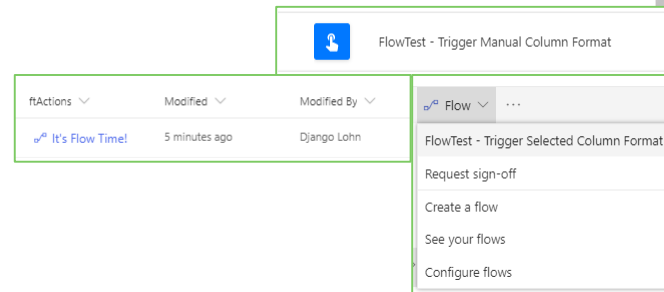
Data Sources

- SharePoint
- Common Data Service



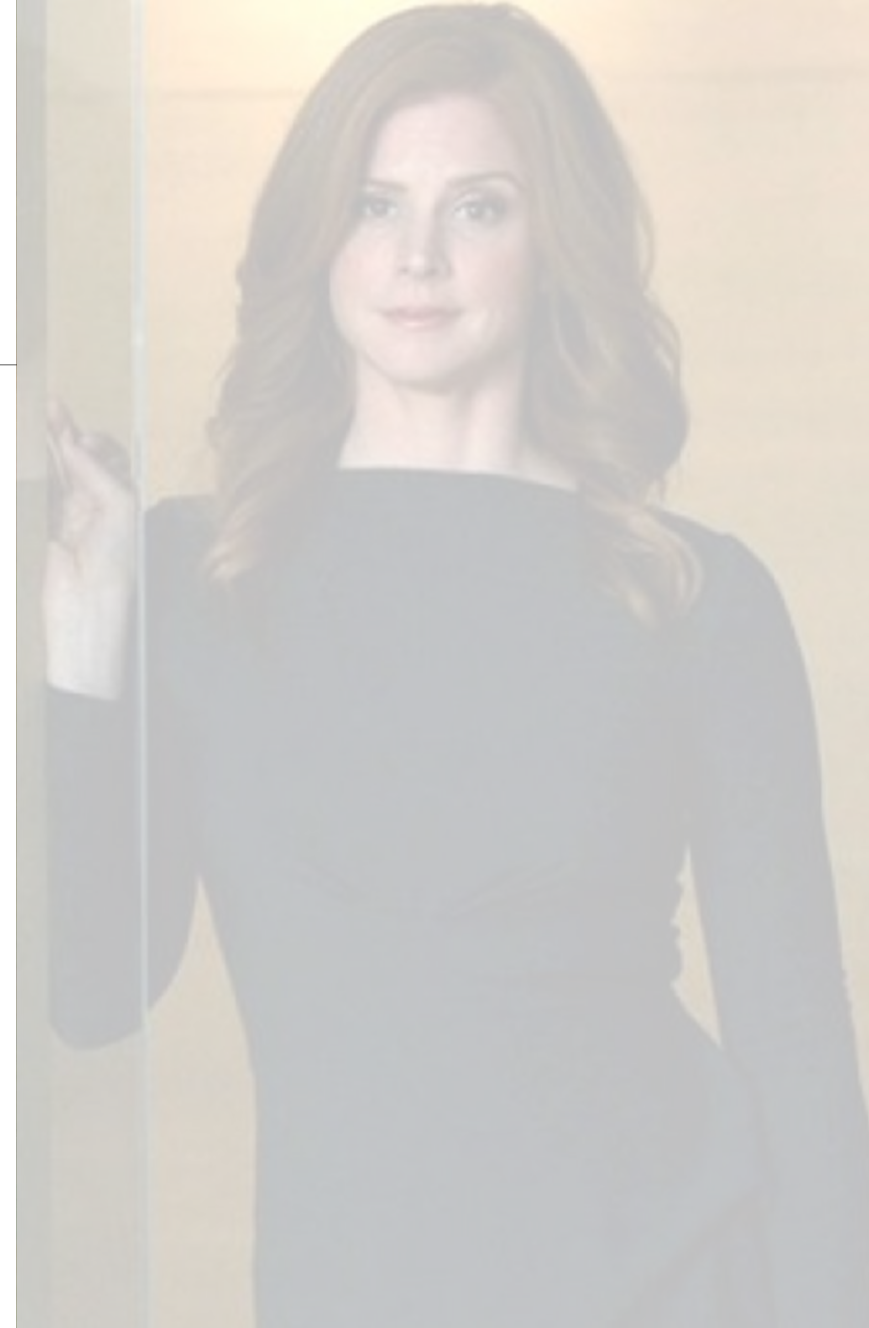
Data Sources

- SharePoint
- Triggers from SharePoint Lists (incl Libraries)
 - Instant
 - Flow Button
 - List Button (selected item)
 - Automated
 - Created
 - Created or modified
 - Deleted



Do's & Don'ts

- NO spaces in SharePoint URL's (lists / columns / views etc)
- Give (Flow) Controls a meaningful (additional) name (Optional Comments)
- Try **Default SharePoint Actions** first
- Resort to **Send an HTTP request to SharePoint** second
- Try a Compose Action to discover the possible syntax



Do's & Don'ts

- Minimize number of runs with Trigger Conditions
#PreventWaste
 1. Settings of triggering step
 2. Discover the right expression
([Workflow Definition Language Functions Reference](#))

Settings for 'When an item is created'

Split On
Enable split-on to start an instance of the workflow per item in the selected array. Each instance can also have a distinct tracking id.
Split On On

Array @triggerBody()?['value']

Split-On Tracking Id

Custom Tracking Id
Set the tracking id for the run. For split-on this tracking id is for the initiating request.
Tracking Id

Retry Policy
A retry policy applies to intermittent failures, characterized as HTTP status codes 408, 429, and 5xx, in addition to any connectivity exceptions. The default is an exponential interval policy set to retry 4 times.
Type Default

Concurrency Control
Limit number of concurrent runs of the flow, or leave it off to run as many as possible at the same time. Concurrency control changes the way new runs are queued. It cannot be undone once enabled.
Limit Off

Trigger Conditions
Specify one or more expressions which must be true for the trigger to fire.
@\leqtriggerBody()?['ID'],1000

+ Add

Done Cancel

Compose Equals

*Inputs `fx equals(...)`

Compose GE

*Inputs Inputs

Add dynamic content

Dynamic content Expression

`fx equal`

- equals
- greaterOrEquals
- lessOrEquals

Add an expression to do basic things like access, convert, and compare values. [Learn more](#)

Hide

LIVE DEMO



Do's & Don'ts

- Get item versus Get items / Get file versus Get Files
- Getting one item needs an ID / Identifier
Getting multiple items does not
 - [Looping and debatching limits](#) on getting items (array)
 - [ODATA filters](#) on minimizing results (<limit)
 - [Power Automate Blog](#)



Common Scenario

- Get items and use data from **one** of the items (without an Apply to each Loop)
 1. Use ODATA filter in Filter Query of Get items and then use first() or last() expression over the array

```
body('Get_items_-_ReceiverFromWhoIsWho')
    first(
        ?[ 'value' ]
    )
    ?[ 'SharePoint_Group' ]
    ?[ 'DisplayName' ]
```

2. Use the indexing logic of the array

```
body('Get_Items_-_ ReceiverFromWhoIsWho')
    ?[ 'Value' ]
    ?[add(1,int(-1))]
    ?[ 'SharePoint_Group' ]
    ?[ 'DisplayName' ]
```

```
1 {
2   {
3     "@odata.etag": "\"1\"",
4     "ItemInternalId": "1",
5     "ID": 1,
6     "Title": "LastName1",
7     "FullName": "Fn1 LastName1",
8     "Email": "Fn1.LastName1@inspark.nl",
9     "Company": "InSpark",
10    "SharePoint_Group": {
11      "@odata.type": "#Microsoft.Azure.Connectors.SharePoint.SPListExpandedUser",
12      "Claims": "InSpark Members",
13      "DisplayName": "InSpark Members"
14    }
15  },
16  {
17    "@odata.etag": "\"2\"",
18    "ItemInternalId": "2",
19    "ID": 2,
20    "Title": "LastName2",
21    "FullName": "Fn1 LastName2",
22    "Email": "Fn2.LastName2@inspark.nl",
23    "Company": "InSpark",
24    "SharePoint_Group": {
25      "@odata.type": "#Microsoft.Azure.Connectors.SharePoint.SPListExpandedUser",
26      "Claims": "InSpark Owners",
27      "DisplayName": "InSpark Owners"
28    }
29  }
30 }
```

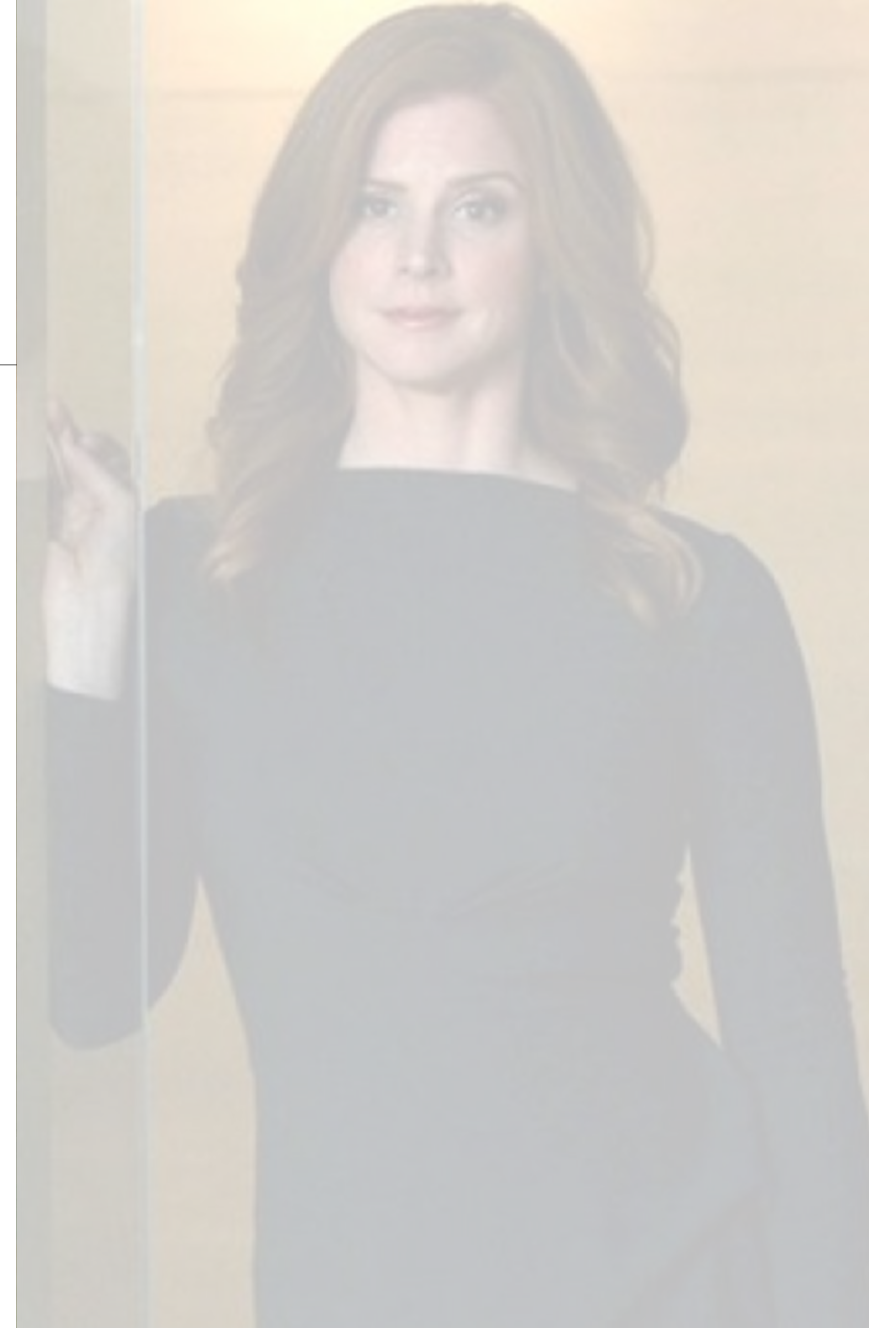


Common Scenario

- Copy files
 - A. Recent default action

The screenshot shows a dialog box titled "Copy file - TemplateToDestination" with a blue header bar containing the SharePoint icon and a three-dot menu. The dialog contains five rows of input fields:

* Current Site Address	{x} varWebUrl x	✕
* File to Copy	{Identifier} x	📁
* Destination Site Address	{x} varWebUrl x	✕
* Destination Folder	/LibraryWorkingFiles	📁
* If another file is already there	Copy with a new name	▾



Common Scenario

- Copy files
 - A. Recent default action
 - B. More granular control “old school”
(get file metadata, get file content, create file)

The screenshot shows a workflow editor interface titled "Apply to each - Template of WorkingFiles". It displays a sequence of three steps connected by downward arrows:

- Step 1:** "Get file metadata - FoundTemplate".
- Step 2:** "Get file content - FoundTemplate".
- Step 3:** "Create file - FoundTemplate".

The "Create file" step is expanded to show its configuration:

- Site Address:** `{x} varWebUrl x`
- Folder Path:** `/LibraryWorkingFiles`
- File Name:** `{x} vartemName x` and `Name x`
- File Content:** `File Content x`



Common Scenario

- Document Sets
 - A. No default action
 - B. Send an HTTP request to SharePoint
 - Create with separate Update
 - Error handling ([basics](#))



Common Scenario

• Basic Error Handling (blog)

Update item - TriggerRequest

'ScopeFlowErrorHandling' should run after:

	Update item - TriggerRequest	<input type="checkbox"/> is successful
	Failed, Timed out, Skipped	<input checked="" type="checkbox"/> has failed
		<input checked="" type="checkbox"/> is skipped
		<input checked="" type="checkbox"/> has timed out

Done Cancel

Update item - TriggerRequest

ScopeFlowErrorHandling

Compose - WorkFlowErrorHandling

Send an email (V2) F

Terminate Error

LIVE DEMO

Questions?

